

0.8m3 Second Hand Komatsu PC200 Excavator With Original Color And 19900kg Operating Weight

Our Product Introduction

for more products please visit us on used-excavator-machine.com

Basic Information

- Place of Origin: Japan
- Price: \$26,700.00/units 1-4 units

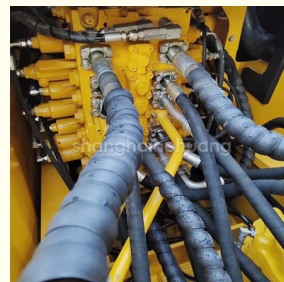
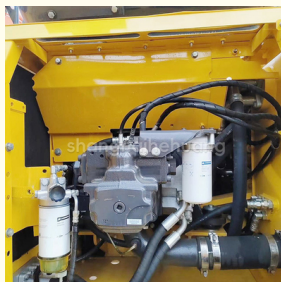
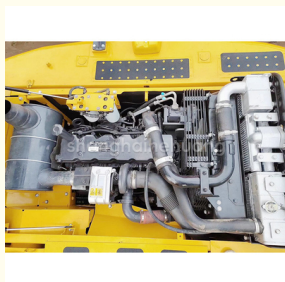


Product Specification

- Showroom Location: None
- Operating Weight: 19900
- Bucket Capacity: 0.8m³
- Machine Weight: 20000 KG
- Hydraulic Cylinder Brand: Original
- Hydraulic Pump Brand: Original
- Hydraulic Valve Brand: Original
- Engine Brand: Cummins
- Power: 110KW
- Machinery Test Report: Provided
- Video Outgoing-inspection: Provided
- Core Components: Pressure Vessel, Motor, Other, Bearing, Gear, Pump, Gearbox, Engine, PLC
- Year: 2022
- Working Hours: 0-2000



More Images



Product Description

Product Description

Komatsu PC200-8 excavator description

Komatsu PC200-8 excavator is a powerful construction machinery equipment, strong power, high efficiency, suitable for a variety of construction environments and tasks. Komatsu PC200-8 excavator is equipped with advanced hydraulic system, accurate operation, smooth action, with the characteristics of high productivity and high economy combined, high pressure common rail fuel injection system, accurate combustion control, CLSS hydraulic system transmission efficiency, fast and flexible action; The new 7-inch LCD color monitor ensures safe, accurate and smooth operation of the equipment.

1. Basic information of Komatsu PC200-8 excavator

The working weight of Komatsu PC200-8 excavator is 19900 kg, the bucket capacity is 0.8 cubic meters, the boom length is 5700mm, and the bucket rod length is 2925mm. Komatsu PC200-8 excavator engine model is Komatsu SAA6D107E-1, rated power 110 kW (2000 RPM), displacement 6.69 liters, 6-cylinder, direct injection, turbocharged, post-cooling engine.

2. Komatsu PC200-8 excavator performance

The speed of Komatsu PC200-8 excavator is 12.4 RPM, the walking speed is 3.0km/h, 4.1km/h, 5.5km/h, the climbing capacity is 70% or 35°, and the ground specific pressure is 44.1kPa. The Komatsu PC200-8 excavator has a bucket digging force of 149kN and a bucket rod digging force of 108kN, which enables the excavator to work efficiently in different terrain and conditions.

3. Komatsu PC200-8 excavator body size

Komatsu PC200-8 excavator has a total transport length of 9480 mm, a total transport width of 2800 mm and a total transport height of 3040 mm. Full cab height 3040 mm, balance weight ground clearance 1085 mm, track off the ground length 3275 mm, track total length 4070 mm, track plate width 600 mm, track total width 2800 mm, track gauge 2200 mm, minimum ground clearance 440 mm, tail end turning radius 2710 mm.

4. Komatsu PC200-8 excavator operating range

The maximum digging radius of Komatsu PC200-8 excavator is 9875mm, the maximum digging radius of stop surface is 9700mm, the maximum digging depth is 6620mm, the maximum digging height is 10000mm, the maximum unloading height is 7110mm, the maximum vertical digging depth is 5980mm, and the maximum effective digging depth is 6370mm

:

Used Komatsu PC200-8 excavator information	
Working weight (kg)	19900
Engine type	SAA6D107E-1
Displacement (L)	6.69
Rated power (kW/RPM)	110/2000
Working form	6-cylinder, direct injection, turbocharged
Track width (mm)	600
Bucket digging force (kN)	149
Travel speed (km/h)	3.0/4.1/5.5
Total transport height (mm)	9480X2800X3040
Location	Shanghai, China

Product features:

The Komatsu PC200-8 excavator is a medium-sized excavator that is widely used in various construction environments. In terms of scenario applications, its main applications include:

Used Komatsu PC200-8 excavators can be used in municipal projects:

Komatsu PC200-8 excavator can perform tasks such as foundation excavation and material loading to support infrastructure construction. The municipal road maintenance and maintenance of Komatsu PC200-8 excavator is also an important application scenario of the excavator, and its high precision and high efficiency make the maintenance work more timely and efficient.

Used Komatsu PC200-8 excavators can be used for agricultural development:

Komatsu PC200-8 excavator is mainly used for land consolidation, which can carry out effective soil loosening, drainage ditch digging and other operations to improve land quality. In the construction of farmland irrigation system, Komatsu PC200-8 excavator can excavate canals and install water pipes to ensure the smooth operation of irrigation system.

Used Komatsu PC200-8 excavators can be used in forestry production:

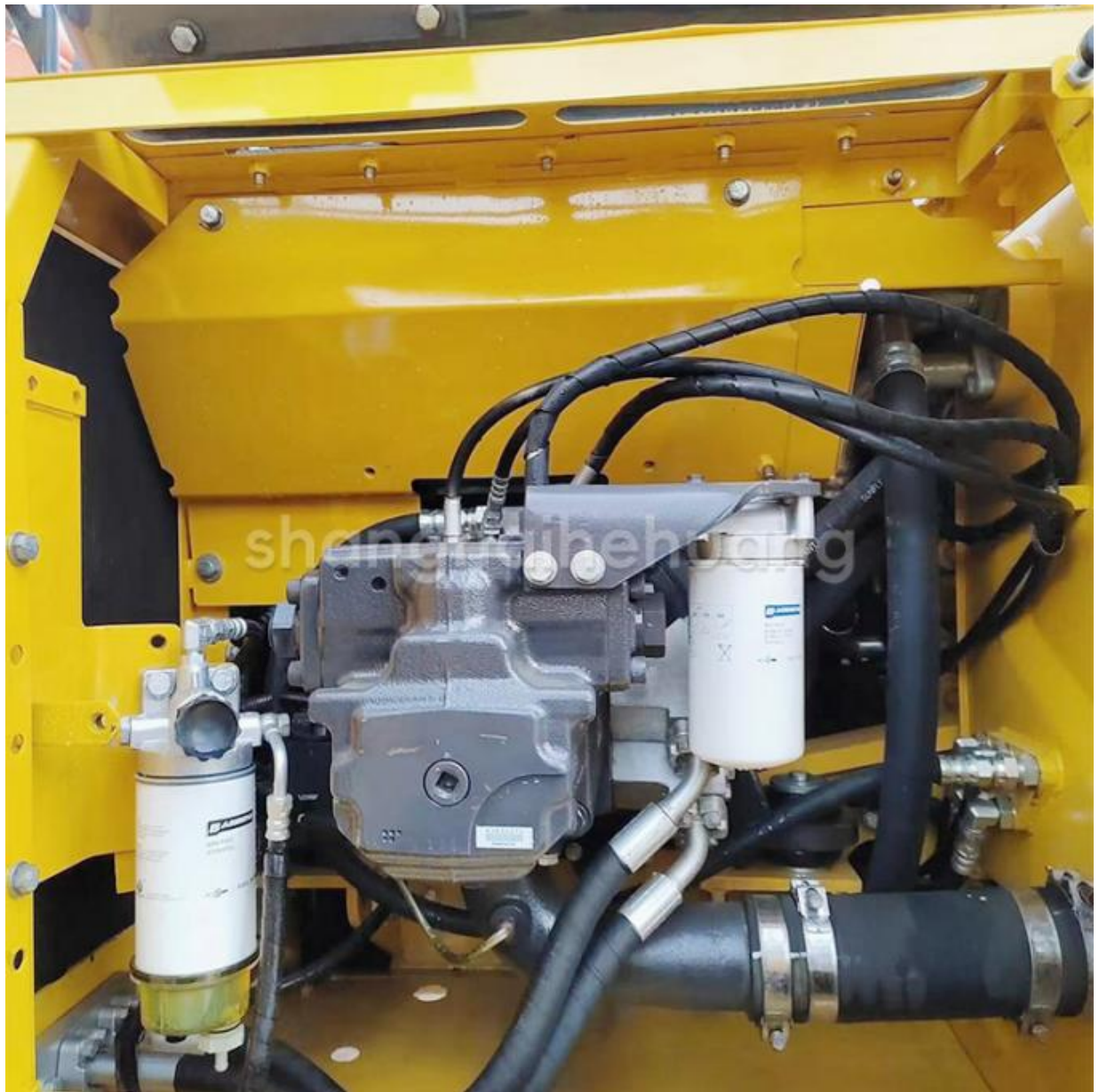
Komatsu PC200-8 excavator is mainly used in forestry production for clearing and maintenance of forest roads, which can excavate and reseed trees to improve the efficiency and safety of forestry operations. In the process of wood mining and transportation, Komatsu PC200-8 excavator with its powerful bucket rod and flexible bucket, can easily complete the loading and handling of wood, greatly improving the efficiency of forestry production.

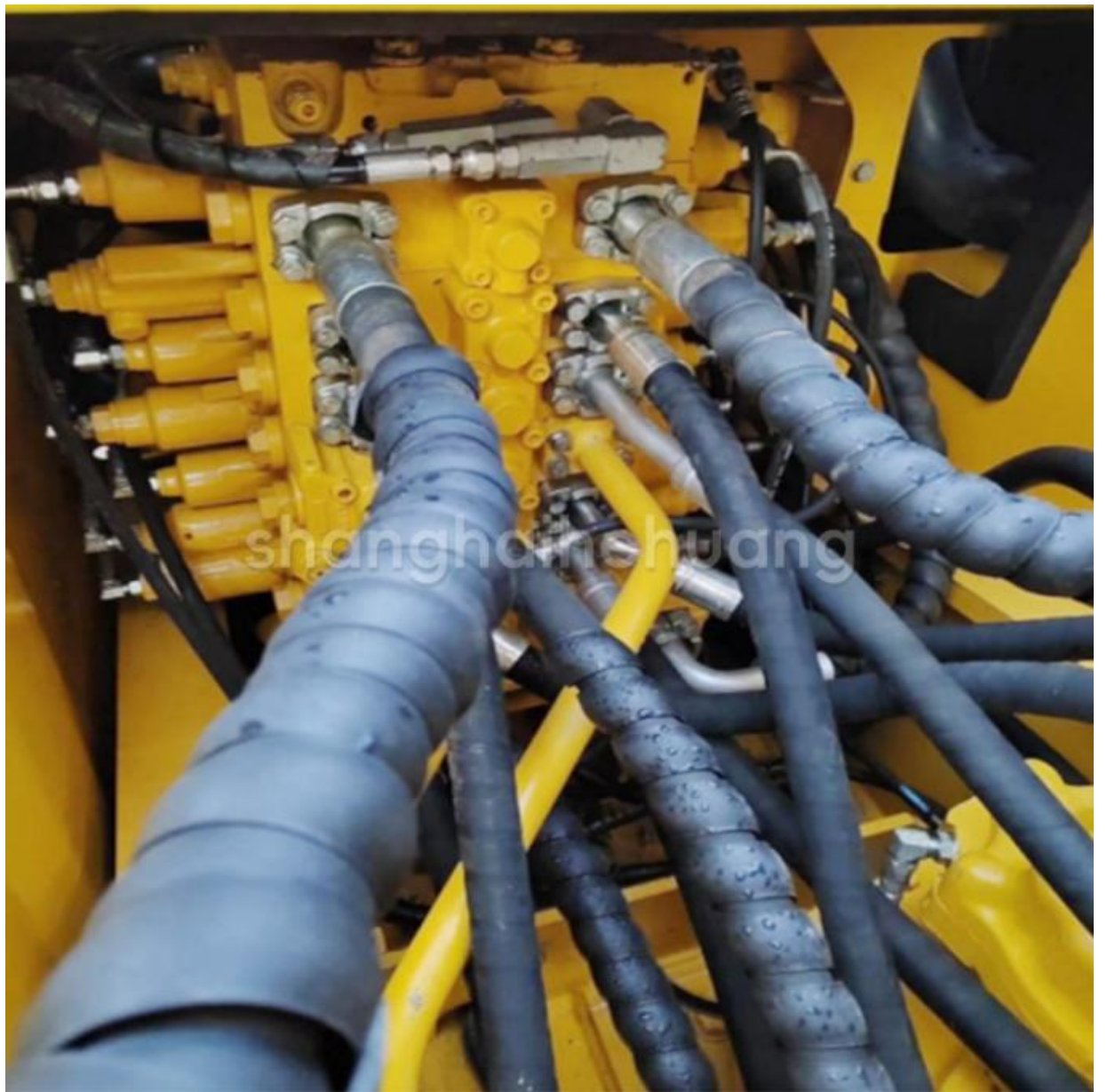
With stable performance and flexible operation, the Komatsu PC200-8 is able to accomplish these tasks efficiently. At the same time, modern excavators are also equipped with advanced control systems and sensors, which can further improve the accuracy and safety of operations.













Company Introduction

Shanghai Hehuang Construction Machinery Co., Ltd., since its establishment on January 15, 2013, after 10 years of development, now has nearly 150 employees, has a large marketing team, after-sales team, sales and service team covering the whole country and overseas. In the future, Shanghai Hehuang will continue to take the four-in-one service system of "machine sales, after-sales service, parts supply and information feedback" as the basis, and provide thoughtful services for the majority of excavator customers with the world's technology and excellent quality and perfect service, so as to promote the continuous development of China's construction machinery industry to a higher level. As

a second-hand excavator sales, Shanghai Hehuang takes "providing benefits for customers and creating value" as all the premise of mission and development, follows the business tenet of "rapid, effective, standardized, standardized, and differentiated", and provides products and services for every customer with the help of "Hehuang" brand image and influence. In the future, Shanghai Hehuang aims to build a worldwide excavator sales industry, and strive to achieve the dream of "grand foundation evergreen".



Global sales



Quality certification



10+ years of
experience



Good reputation

Title goes here.

Semi-Automatic PET Bottle Blowing Machine Bottle Making Machine Bottle Moulding Machine PET Bottle Making Machine is suitable for producing PET plastic containers and bottles in all shapes.

Products Description

Carter used excavator

CAT303/CAT305/CAT305.5/CAT306/CAT307/
CAT308/CAT311/CAT312/CAT313/CA315/CA
T318/CAT320/CAT323/CAT324/CAT325/CAT
326/CAT329/CAT330/CAT336/C
AT340/CAT345/CAT349/CAT375

Doosan used excavator

DH(DX)35/55/60/70/75/80/150/200/215/220/2
25/235260300350370/4050 30

Sany used excavator

SY16/SY35/SY55/SY60/Y65/SY75/SY85/SY9
5/SY115/SY135/SY155/SY205/SY215/SY235/
SY265/SY305/SY335/SY365

Hitachi used excavator

EX50/EX55/EX60/EX100/EX120/EX200/ZX50
/ZX55/ZX60/ZX70/ZX75/ZX120/ZX125/ZX130/
ZX135/ZX200/ZX210/ZX230/ZX240/ZX250/ZX
270/ZX300/ZX330/ZX350/ZX
60/ZX450/ZX600

Kobelco used excavato

SK50/SK55/SK60/SK70/SK75/SK115/SK135/
SK140/SK160/SK200/SK210/SK230/S235/SK
250/SK260/SK330/SK350/SK450/SK460

Hyundai used excavator

R55/R60/R70/R75/R80/R110/R115/R130/R15
0/R200/R205/R210/R220/R225/R245/305/R37
5/R420

Kubota used excavator

10/15/16/17/18/20/25/30/35/40/50/155/161/16
3/165/185

Volvo used excavator

EC55/EC60/EC80/EC140/EC200/EC210/EC2
40/EC290/EC300/EC360/EC380/EC460/EC48
0

Excavators of other brands

QAY,CLG,Keith,Takeuchi,Sumitomo,Yanmar,I
HI,SUNWARD, Yuchai.Zoomlion

Why choose us

Customers report that a variety of terrains
can be easily resolved



Our exhibition



Application scenarios

— Meet your every need —



Digging a trench in the orchard



Crushing and demolition



House construction



Urban construction



Rural transformation



Wasteland cultivation of grass



Grab handling



Rotary drill pits



Vineyard excavation



Landscape construction



Mountain forest reclamation



Road construction

Packing & Shipping



Certifications

FAQ

Q:These machines are original?

A:Yes,our machine are alloriainal. If you are interested in, we will send some images and plates to you. er.

Q:Do you have other services?

A:Our company's aim is to meet your satisfaction, our services including best price, shipping&packaging, long-time warranty and book cargo space.

Q:What's the payment term?

A:As normal 30% T/T deposit, 70% T/T before shipment. L/c, other payment term can be negotiated.

Q:May I know how soon I can get the machine after I transfer the deposit?

A:Usually, if the quantity is less than 20 units, we can deliver the machines with 5-10days. We will try our best to send you our machines as soon as possible.



Shanghai Hehuang Construction Machinery Co., Ltd.

+8615021417458

15021417458@163.com

used-excavator-machine.com

3539A Jingdong Road, Minhang District, Shanghai