

ISUZU Engine Used SANY SY135C Excavator with Low Working Hours and High Work Efficiency

Our Product Introduction

for more products please visit us on used-excavator-machine.com

Basic Information

- Place of Origin: China
- Brand Name: Sany
- Certification: FQC2417101
- Model Number: SY135C
- Minimum Order Quantity: 1 unit
- Price: \$16,000.00/units 1-4 units
- Delivery Time: 7days
- Payment Terms: L/C, D/A, D/P, T/T
- Supply Ability: 150 units per month

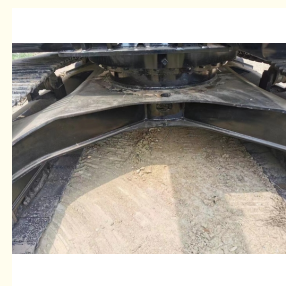


Product Specification

- Showroom Location: None
- Operating Weight: 13500
- Bucket Capacity: 0.53m³
- Machine Weight: 13000 KG
- Hydraulic Cylinder Brand: Original
- Hydraulic Pump Brand: Original
- Hydraulic Valve Brand: Original
- Engine Brand: ISUZU
- Power: 69.6KW
- Machinery Test Report: Provided
- Video Outgoing-inspection: Provided
- Core Components: Pressure Vessel, Motor, Bearing, Gear, Pump, Gearbox, Engine, PLC, Other
- Year: 2019
- Working Hours: 0-2000



More Images

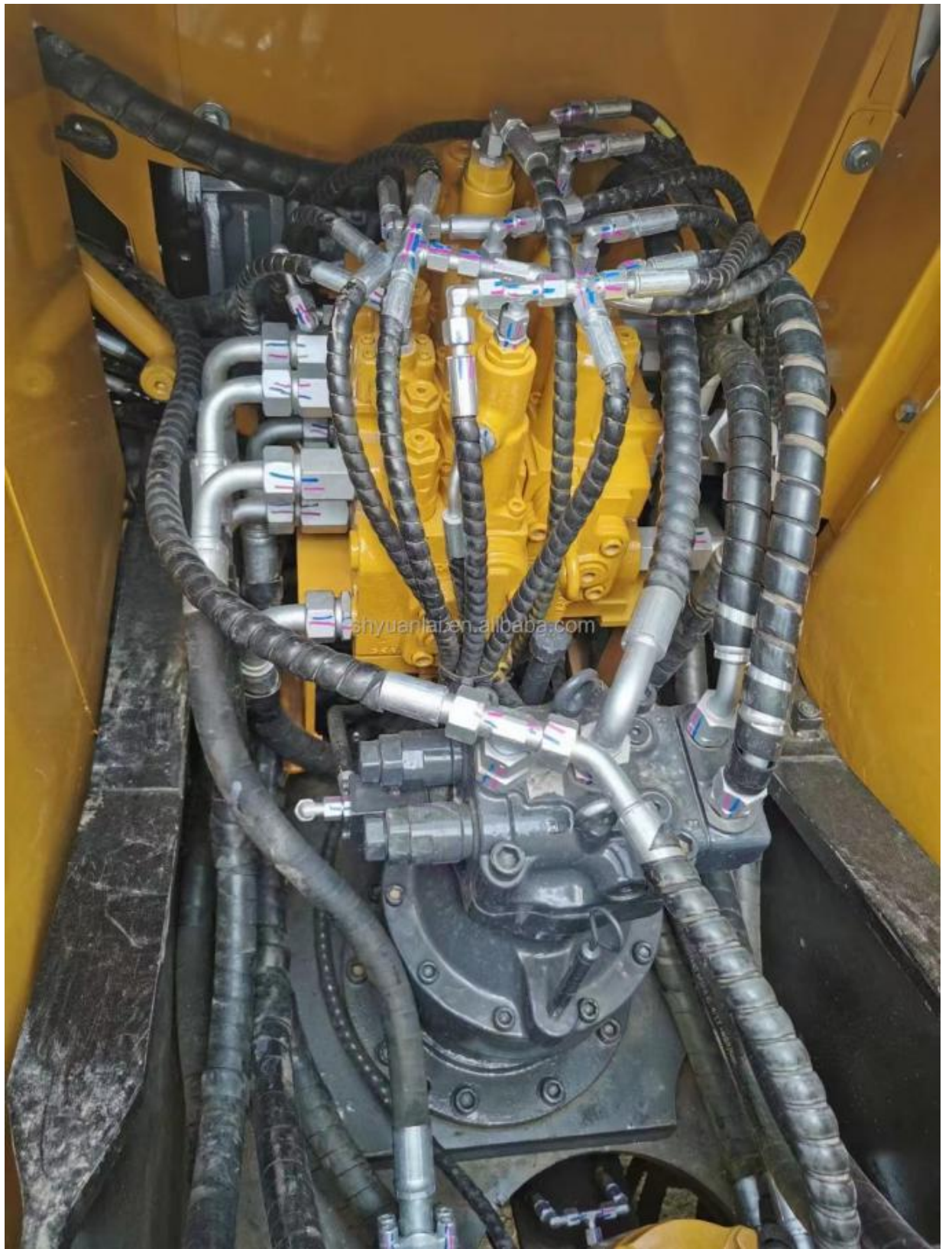


Product Description

Our Product Introduction

for more products please visit us on used-excavator-machine.com









CONTACT SUPPLIER

If you would like to learn more about product details, please send me an inquiry for different models, specifications, and prices. I will immediately provide you with a product catalog, or provide you with a video on-site to tell you about the use of the product and more detailed information

Contact Supplier

If you would like to learn more about product details, please send me inquiries about different models, specifications, and prices. I will immediately provide you with a product catalog or provide you with an on-site video to tell you about the use of the product and more detailed information

hot products

Carter 305E



Kubota U15



SY26U



PC55MR



Hitachi50U



Hitachi 120



pc200



DH150



EC210



SWE80E9



SY215



SK200D



HYUNDAI 220LC



CAT320D



DX225



Company Introduction

Shanghai Hehuang Construction Machinery Co., Ltd., since its establishment on January 15, 2013, after 10 years of development, now has nearly 150 employees, has a large marketing team, after-sales team, sales and service team covering the whole country and overseas. In the future, Shanghai Hehuang will continue to take the four-in-one service system of "machine sales, after-sales service, parts supply and information feedback" as the basis, and provide thoughtful services for the majority of excavator customers with the world's technology and excellent quality and perfect service, so as to promote the continuous development of China's construction machinery industry to a higher level. As a second-hand excavator sales, Shanghai Hehuang takes "providing benefits for customers and creating value" as all the premise of mission and development, follows the business tenet of "rapid, effective, standardized, standardized, and differentiated", and provides products and services for every customer with the help of "Hehuang" brand image and influence. In the future, Shanghai Hehuang aims to build a worldwide excavator sales industry, and strive to achieve the dream of "grand foundation evergreen".



Global sales



Quality certification



10+ years of
experience



Good reputation

Why choose us

Customers report that a variety of terrains can be easily resolved



Application scenarios

— Meet your every need —



Digging a trench in the orchard



Crushing and demolition



House construction



Urban construction



Rural transformation



Wasteland cultivation of grass



Grab handling



Rotary drill pits



Vineyard excavation



Landscape construction



Mountain forest reclamation



Road construction

Packing & Shipping



 **Shanghai Hehuang Construction Machinery Co., Ltd.**

 +8615021417458

 15021417458@163.com

 used-excavator-machine.com

